

PUBLIC UTILITIES COMMISSION
505 VAN NESS AVENUE
SAN FRANCISCO, CA 94102-3298

SEP 19 2011

THE EMMONS COMPANY



To: State Clearinghouse, Responsible and Trustee Agencies, Property Owners
& Interested Parties

From: Juralynne Mosley, Environmental Project Manager

Subject: NOTICE OF AVAILABILITY OF A DRAFT ENVIRONMENTAL IMPACT REPORT
(DRAFT EIR) AND PUBLIC MEETING:
Presidential Substation Project (A.08-12-023)
SCH No. 2009021059

Date: September 16, 2011

The California Public Utilities Commission (CPUC) has prepared a Draft Environmental Impact Report (Draft EIR) under the California Environmental Quality Act (CEQA) for consideration of Southern California Edison's (SCE) application to construct, operate and maintain the Presidential Substation Project (A.08-12-023). The Draft EIR details the Proposed Project, evaluates and describes the potential environmental impacts associated with the construction, operation and maintenance of the Proposed Project, identifies those impacts that could be significant, and presents mitigation measures which, if adopted by the CPUC or other responsible agencies, could avoid or minimize these impacts. The Draft EIR also evaluates alternatives to the Proposed Project, including the No Project Alternative, as required by CEQA.

Description of the Proposed Project.

The Proposed Project is located in the City of Thousand Oaks and unincorporated Ventura County. SCE requests authorization to:

- Construction of a new 66/16 kV distribution substation (proposed Presidential Substation) on an approximately 4-acre site;
- Replacement of existing 16 kV distribution and subtransmission poles with new subtransmission poles and installation of 66 kV subtransmission conductor to supply the proposed Presidential Substation;
- Installation of underground 66 kV subtransmission facilities for the portion of the route crossing Highway 23 (Hwy 23);
- Construction or relocation of related 16 kV distribution components, including four new 16 kV distribution getaways at the proposed Presidential Substation, and relocation, transfer, or upgrade of existing 16 kV distribution facilities either to new subtransmission poles or to new underground 16 kV distribution facilities. Upgrades to new 16 kV distribution would involve installation of new conductors instead of re-hanging or burying the existing 16 kV conductor; and
- Construction of facilities to connect the proposed Presidential Substation to SCE's existing telecommunications system.

The objectives of the Proposed Project are to meet long term electrical demand requirements and improve electrical system operational flexibility and reliability in a cost effective manner.

Public Comment on the Draft EIR.

The Draft EIR is available for a 45-day public comment period September 16, 2011 through Oct 31, 2011. The public may present comments and concerns regarding the Proposed Project and the adequacy of the Draft EIR. Written comments on the Draft EIR must be postmarked or received by fax or e-mail no later than October 31, 2011. Please be sure to include your name, address, and telephone number in your correspondence.

Written comments on the Draft EIR should be sent to:

**Ms. Juralynne Mosley
Presidential Substation Project
c/o ESA
1425 N. McDowell Blvd., Suite 200
Petaluma, CA 94954
Phone: (415) 962-8409
Fax: (415) 896-0332
presidentalsub@esassoc.com**

The CPUC will also hold a public comment meeting to receive oral and written comments from interested parties. Following the end of the public comment period, responses to all comments received on the Draft EIR and submitted within the specified 45-day review period will be prepared by the CPUC and included in a response to comments document, which together with the Draft EIR, will constitute the Final EIR for the Proposed Project. The public meeting will be held:

**Thursday October 13, 2011
6:30 pm – 8:30 pm
Palm Garden Hotel, 495 N. Ventu Park Road,
Thousand Oaks, CA 91320**

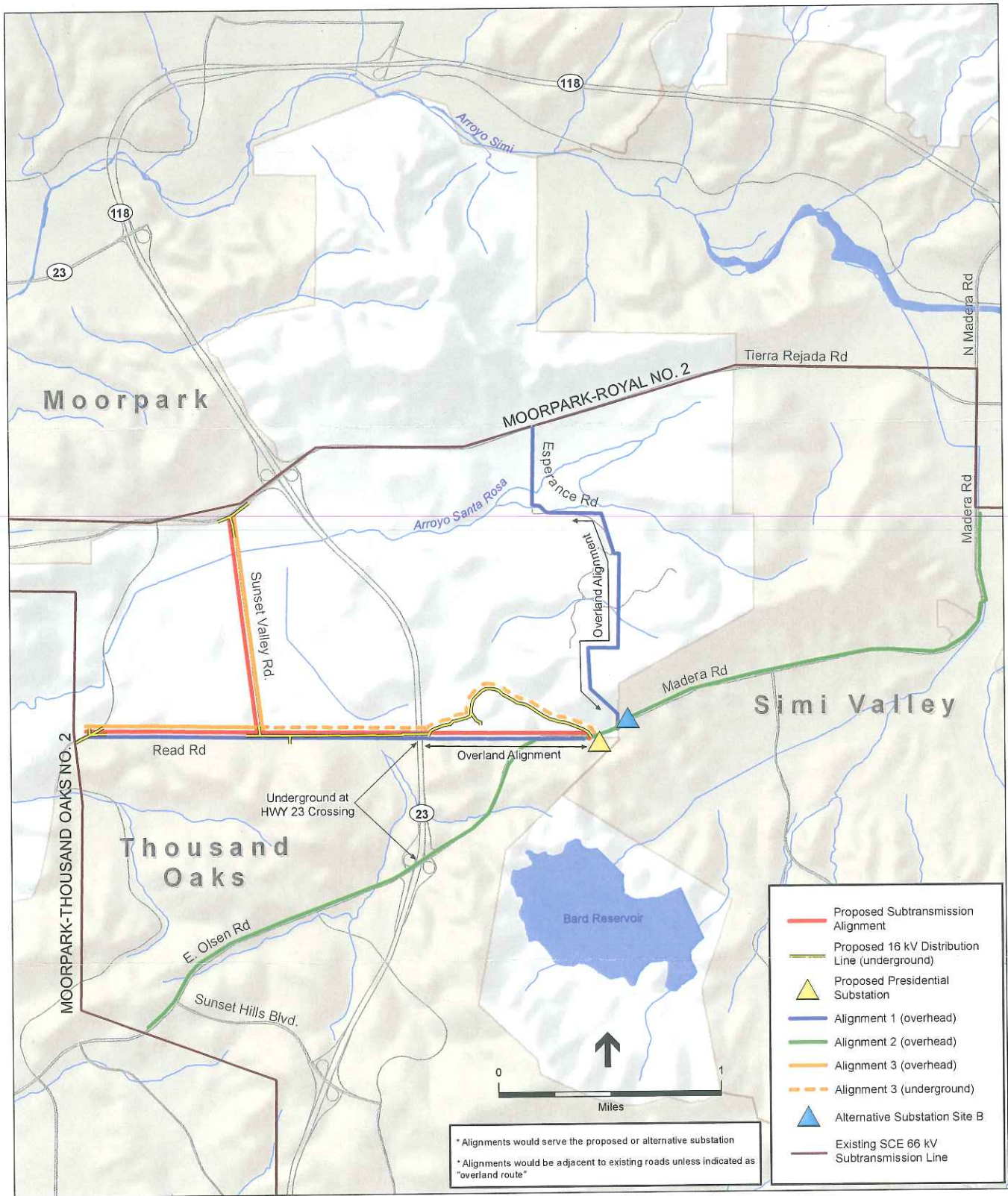
Availability of Draft EIR.

Copies of the Draft EIR will be available for public review at the Moorpark City Library, Grant R. Brimhall Library in Thousand Oaks, Simi Valley Library, and on the project website: <http://www.cpuc.ca.gov/Environment/info/esa/presidentalsubstation/index.html>. This website will be used to post all public documents during the environmental review process and to announce any upcoming public meetings. Hard copies or CD copies of the Draft EIR may be requested by telephone at (415) 962-8409 or by e-mail at presidentalsub@esassoc.com.

Project information repositories include the following branches:

<p>Moorpark City Library 699 Moorpark Ave Moorpark, CA 93021 Phone: (805) 517-6370</p>	<p>Grant R. Brimhall Library 1401 E. Janss Road Thousand Oaks, CA 91362 Phone : (805) 449-2660</p>	<p>Simi Valley Library 2969 Tapo Canyon Simi Valley, CA 93063 Phone : (805) 526-1735</p>
--	--	--

REMINDER: Draft EIR comments will be accepted by fax, e-mail, or postmark through October 31, 2011. Please be sure to include your name, address, and telephone number.



SOURCE: SCE, 2010

Presidential Substation Project . 207584.02

Figure ES-2

Alternative Subtransmission Alignments